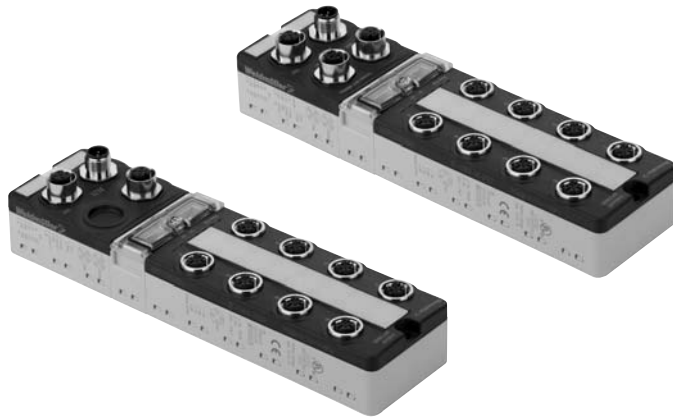


## Network components in IP67 Industrial Ethernet for field wiring

### 8-port unmanaged switch in IP67 8-port managed switch in IP67

# NEW



Industrial Ethernet directly on the machine with simple and safe M12 plug-in connectors. Weidmuller provides managed and unmanaged switches as well as cables and plug-in connectors.

- Designed for the most extreme environments
- Integrated IP67 housing
- M12-D-coded plug-in connector

#### IE-switches

- Redundant voltage supply
- Configuration via Web browser or via RS232 connection
- Redundancy through RapidRing™ protocol (switching time <300 ms)
- Port blocking, port filtering, port set-up
- QoS on VLAN basis, port basis, MAC basis, IP type of service (TOS), DiffServ



#### Canada

Weidmuller, Canada  
10 Spy Court  
Markham, Ontario L3R 5H6  
Telephone: (800) 268-4080  
Facsimile: (905) 475-2798  
Email: info1@weidmuller.ca  
Website: www.weidmuller.ca

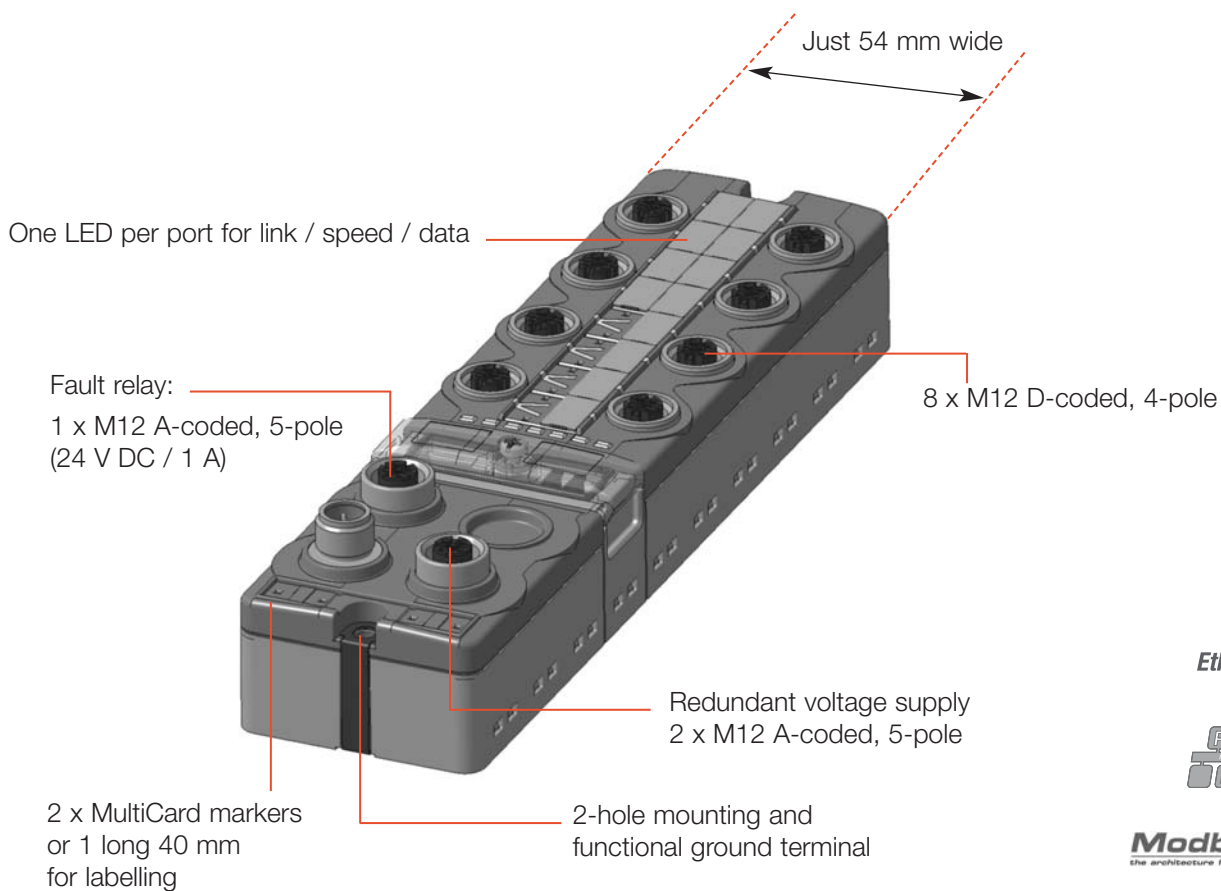
#### Mexico

Weidmuller, Mexico  
Bvd. Hernamos Serdán 698  
Col. San Rafael Oriente  
Peubla, Puebla  
C.P. 72029, Mexico  
Telephone: 01 222 2686227  
Facsimile: 01 222 2686219

#### United States

Weidmuller  
821 Southlake Blvd.  
Richmond, Virginia 23236  
Telephone: (800) 849-9343  
Facsimile: (804) 379-2593  
Email: info@weidmuller.com  
Website: www.weidmuller.com

### 8-port unmanaged switch in IP67



Switches are the central components of a network. They prevent data collision, allow rapid packet switching and enhance data throughput. Weidmuller switches meet the demands placed on the Fast Ethernet with its transmission rate of up to 100 Mbit/s, and they are downward compatible with the older networks that have a transmission rate of 10 Mbit/s (IEEE 802.3). They recognize the speed automatically.

Weidmuller's unmanaged switches are Plug & Play devices for easy installation of Ethernet networks.

For direct connection to the network in the field, Weidmuller now offers an IP 67 switch with eight Ethernet ports for use in harsh environments.

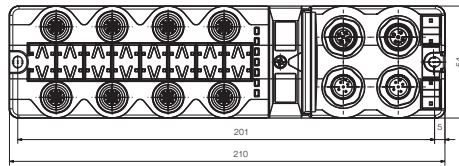
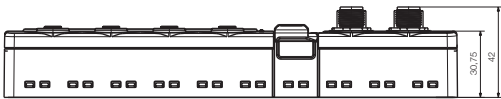
- Robust plastic housing (IP67 ingress protection class) for use in the field, complying with UL94 flammability rating V0
- Strip markers – wide range of marking systems and products
- Eight Ethernet ports with M12-D-coded plug-in connectors
- Temperature range from  $-40\text{ }^{\circ}\text{C}$  to  $+60\text{ }^{\circ}\text{C}$

## Unmanaged switch

- IP67 housing
- M12-D-coded plug-in connector

## IE-SW8-IP67

8 ports



### Technical data

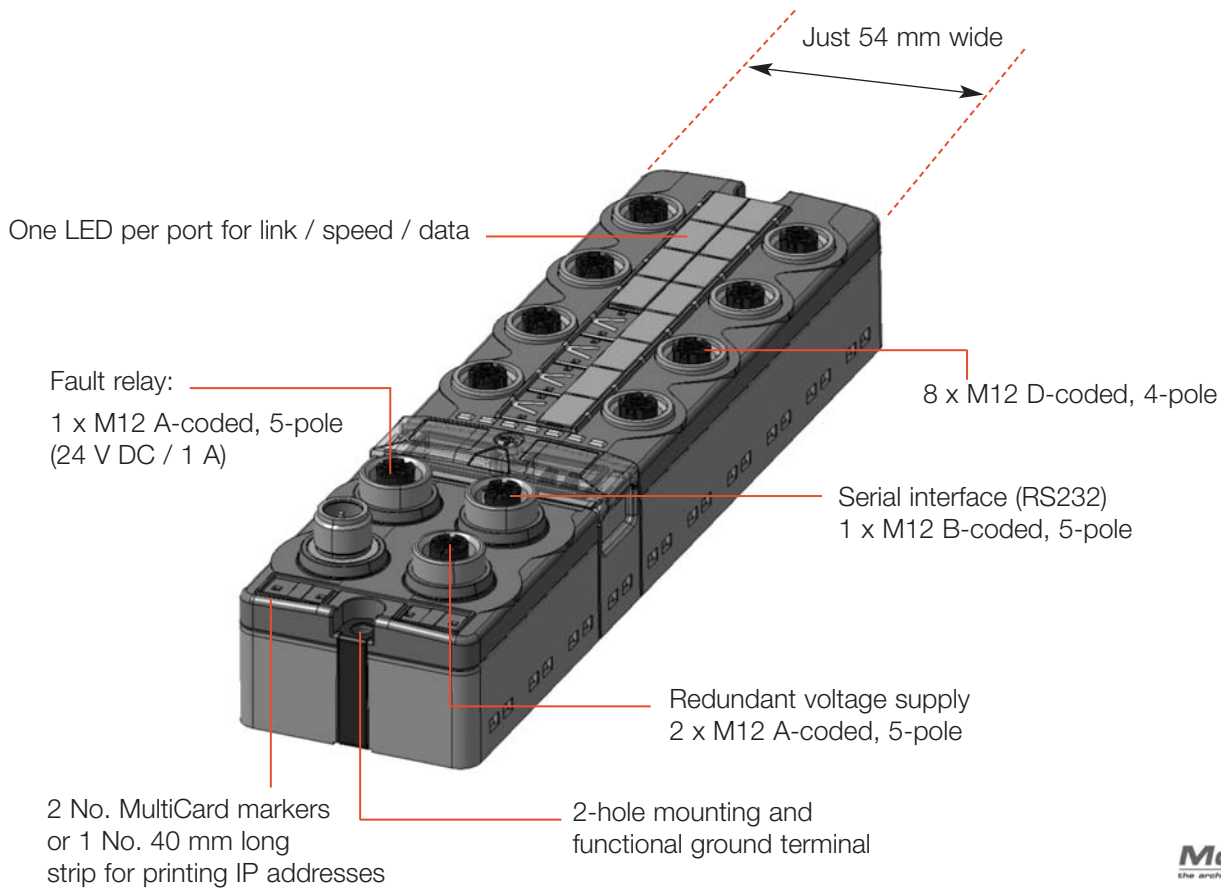
Housing	Plastic
Ports	8x M12 D-Coded
AC input voltage, min.-max.	8-24
DC input voltage, min.-max.	10-36 V DC
Input power AC / DC	max. 5 W
Input frequency	47 - 63 Hz
Operating temperature, min.-max.	-40 °C ... 60 °C (-40 °F ... 140 °F)
Storage temperature, min.-max.	-40 °C ... 85 °C (-40 °F ... 185 °F)
Installation	Wall
Ingress protection class	IP 67
Standard	IEEE 802.3, 802.3u, 802.3x
Data rate	10BASE-T/100BASE-TX
Segment length	Copper 100 m
Functionality	Auto-negotiation, redundant voltage supply, fault relay for PLC support
Flow control	half duplex/full duplex
Status indication	Power;Link;Status;Run
Buffer memory	256 KBytes
Address memory	4K MAC addresses
Approvals	CE, cULus
Aging	300 s
Length x width x height, mm (in)	210 x 54 x 31 (8.27 x 2.13 x 1.22)

### Ordering data

Type	Part No.
IE-SW8-IP67	8877190000

## Industrial Ethernet for field wiring

### 8-port managed switch in IP67



For decentralized development of industry networks, many applications require a central switch. Weidmuller's managed switches enable networks to be structured in order to optimize transport routes and times for network traffic. All Weidmuller switches are protocol transparent. Each port forms both a network segment and a collision domain that are intrinsic to the port itself. The entire network bandwidth is available to each of these segments. This results in enhanced network performance not only over the network as a whole, but also in each individual segment.

The features of the managed IP67 switch from Weidmuller include the following:

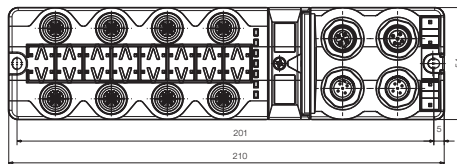
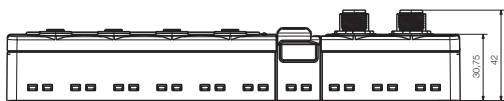
- Port trunking
- Port mirroring
- VLAN IEEE 802.1Q
- Filtering and forwarding table with fixed entries
- Selective multicast control
- Quality of service
- Configurable relay functions
- Access to the address table
- Configuration via Web interface or terminal program
- SNMP V.1-capability
- RSTP and RapidRing™
- IGMP snooping with querier functions
- Auto-crossing, auto-negotiation, auto-polarity
- Broadcast limitation
- Flow control IEEE 802.3x
- DHCP
- RMON (statistics, history, alarms, occurrences)

## Managed switch

- IP67 housing
- M12-D-coded plug-in connector

## IE-SW8-M-IP67

8 ports



## Technical data

Features	SNMP V1 / Rapid Ring / RSTP 802.3w
	IGMP Snooping / Querier
	Port Mirroring / Port Filtering
	Port Setup Functionality
	Trunking / VLAN / QoS / TOS / Diffserv
	MAC-based trunking
	Auto-crossover / Autopolarity
	Filtering and forwarding table
Ports	8x M12 D-Coded
AC input voltage, min.-max.	8-24 V AC
DC input voltage, min.-max.	10-36 V DC
Input power AC / DC	max. 5 W
Input frequency	47 - 63 Hz
Operating temperature, min.-max.	-40 °C ... 60 °C (-40 °F ... 140 °F)
Storage temperature, min.-max.	-40 °C ... 85 °C (-40 °F ... 185 °F)
Data rate	10BASE-T/100BASE-TX
Segment length	Copper 100 m
Functionality	Auto-negotiation, redundant voltage supply, ring structure; fault relay for PLC support
Flow control	half duplex/full duplex
Status indication	Power;Link;Status;Run
Buffer memory	256 KBytes
Address memory	4K MAC address
Approvals	CE, cULus
Aging	300 s
Length x width x height, mm (in)	210 x 54 x 31 (8.27 x 2.13 x 1.22)

## Ordering data

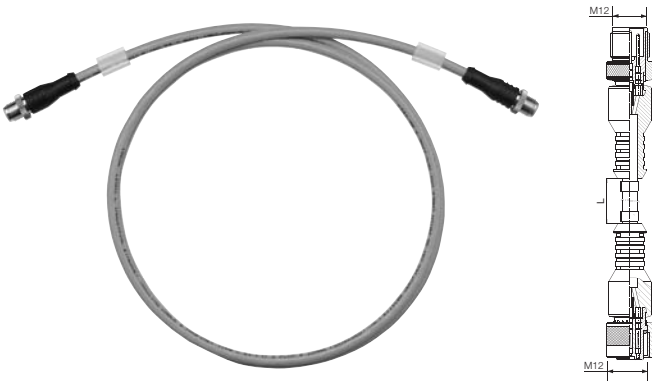
Type	Part No.
IE-SW8-M-IP67	8877200000

## Accessories

Type	Part No.
Programming cable RS232 on M12	8874290000

# Industrial Ethernet for field wiring

## Accessories



### Technical data

Plug-in connector	
Version	Pin
Coding	D
No. of poles	4
Cable construction (Cat.5/Class D) – PROFINET	
Cable cross-section, mm	6.5 (2x2x AWG/7)
Conductor cross-section, mm <sup>2</sup>	4 x 0.75
Strand construction, mm <sup>2</sup>	7 x 0.25
Storage temperature, mm	1.5
Drain wire, mm <sup>2</sup>	
Overall shield (cable)	Aluminium shield (overlapping), 0.13 mm Copper wires, covering approx. 85 %
Strand color	Blue, orange, white, yellow
Sheathing color	Green
Sheathing material	PUR
Mechanical parameters	
Storage temperature, °C (°F)	-50 up to +70 (-58 up to +158)
Operating temperature, °C (°F)	-20 up to +60 (-4 up to +140)
Minimal bending radius, mm	7.5 x Ø repeated, 5 x Ø single
Weight, kg/km	61
Electrical parameters	
Loop resistance, Ohm/km	≤120
Signal propagation delay, ns/m	≤ 5.3
Insulation resistance, MOhm *km	≤ 500
Impedance 1-100 MHz, Ohm	100 ± 15
UL rating, kg/km	600
Surface transition impedance	
10 MHz, mOhm/m	≤ 10
Test voltage, kg/km	2000
<b>Note</b>	L in the dimensional drawing is the line length

### Ordering data

Connecting cables	Type	Part No.
Plug (straight) to plug (straight)	1.5 m IE-C5CD4U001.5-M12SM12S	<b>8877610015</b>
	3.0 m IE-C5CD4U003.0-M12SM12S	<b>8877610030</b>
	5.0 m IE-C5CD4U005.0-M12SM12S	<b>8877610050</b>
	10.0 m IE-C5CD4U010.0-M12SM12S	<b>8877610100</b>
Connectors		
Plug	4-pole D-Coded SAISM-4/8S-M12-4P D-COD	<b>1892120000</b>
Socket	4-pole D-Coded SAIBM-4/8S-M12-4P D-COD	<b>1892130000</b>
Socket	5-pole A coded SAIBM-5/8S-M12-5P-A-COD	<b>1784750000</b>
Plug	4-pole D coded 90° SAISW-4/8S-M12-4P D-ZF	<b>1803930001</b>
Adapters		
RJ45 to D-Coded M12 90°	IE-M12 Adap a	<b>8901630000</b>
RJ45 to D-Coded M12 Straight	IE-M12 Adap b	<b>8901620000</b>
M12 D-Coded Coupler	IE-M12 Coup	<b>8901640000</b>
Tools		
Screwty® tool	Screwty for M12	<b>1900000000</b>
Stripping tools	AM 12	<b>9030060000</b>
Configuration cable managed Switch		
RS232 Sub-D to M12	IE-C-RS232-M12	<b>8874290000</b>
Accessories		
M12 Protective Cap	SAI-SK-M12-UNI	<b>2330260000</b>

## JPOVP Cat.5 M12

### Ethernet Cat.5



### Technical data

Rated voltage	30 V AC/DC
Operating voltage (DC), max.	30 V
Rated discharge current per path (8/20) µs	5.00 kA
Total discharge current, max (8/20) µs	10 kA
DC response voltage	230 V
Attenuation	<0.3 dB at 250 Hz
Response time	≤ 5 ns
Rated current	0.20 A
Protection level, signal line, wire to wire/PE	130 V/600 V
Protection level, supply, wire to wire/PE	80 V/300 V

### General data

Operating temperature, °C (°F)	-25 up to +60 (-4 up to +140)
Overvoltage category	III
Pollution severity	2
Type of connection	to IEC 61076-2-101-AI; M12 - plug/plug, D-coded
Approvals	CE

### Dimensions

Length x width x height mm	57 x 36 14.4
<b>Note</b>	Each cable 1.5 m long

### Ordering data

Type	Part No.
JPOVP M12 D-coded Cat5	<b>8805570000</b>